



TECHNICAL REPORT



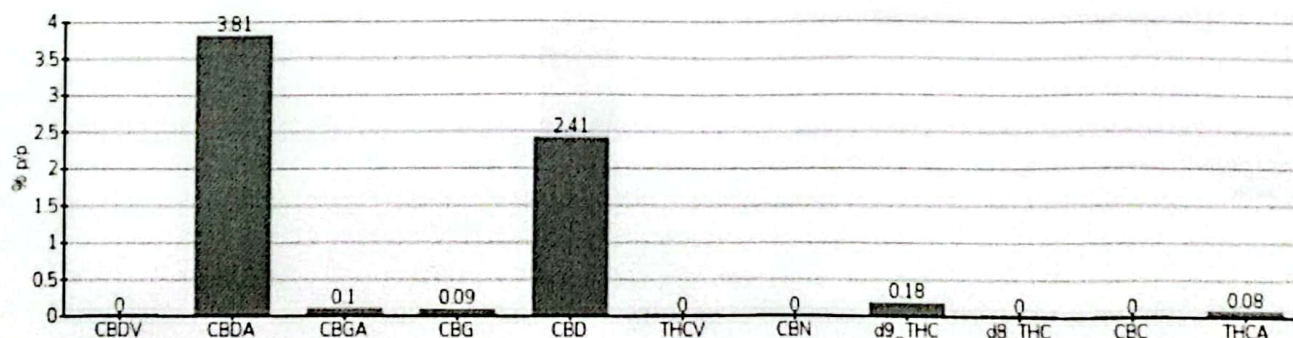
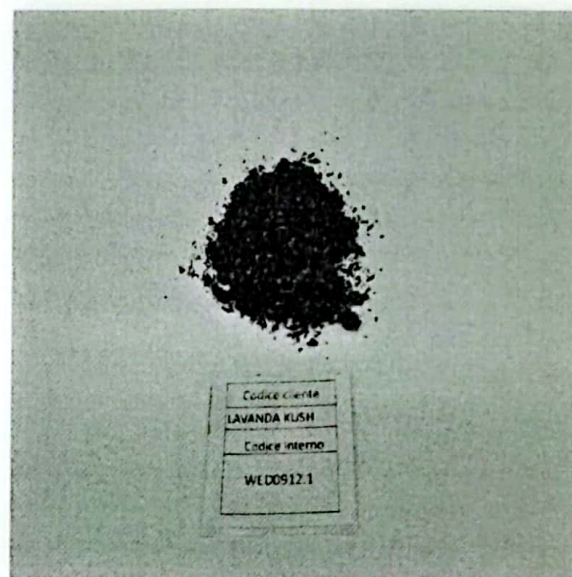
Data accettazione 09/12/2024
Data analisi 16/12/2024
Codice riferimento interno WED0912.1
Metodica analitica HPLC - HS - Rev.2
Lotto B8-W-B29062202

Etichetta LAVANDA KUSH
Tipologia campione infiorescenza
varietà NA
N. Cartellino NA
Campionamento a cura del cliente

Note

Parametro	% p/p	Metodo
CBDV	<0.01%	HPLC-UV
CBDA	3.81%	HPLC-UV
CBGA	0.10%	HPLC-UV
CBG	0.09%	HPLC-UV
CBD	2.41%	HPLC-UV
THCV	<0.01%	HPLC-UV
CBN	<0.01%	HPLC-UV
d9_THC	0.18%	HPLC-UV
d8_THC	<0.01%	HPLC-UV
CBC	<0.01%	HPLC-UV
THCA	0.08%	HPLC-UV
CBD TOTALE	5.75%	CALCOLATO
CBG TOTALE	0.17%	CALCOLATO
THC TOTALE	0.25%	CALCOLATO

CAMPIONE ANALIZZATO: NA(0.00gr)



Pineto

16/12/2024